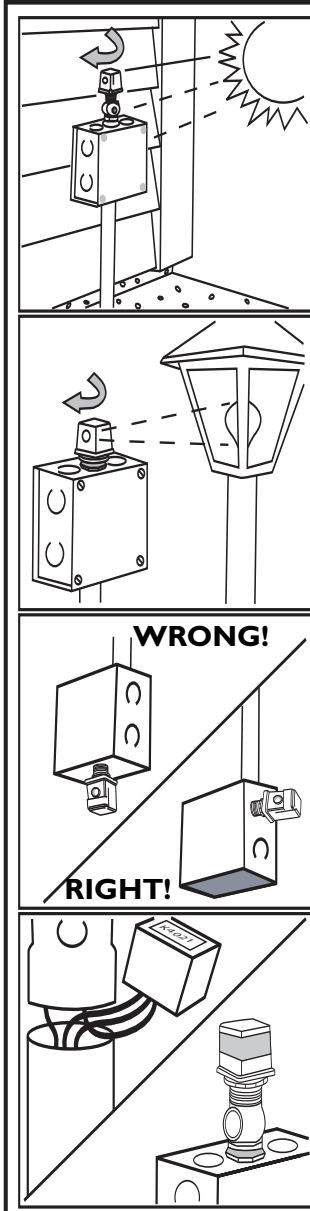




Instructions for installing K4XXX and LC4XXX series photo controls



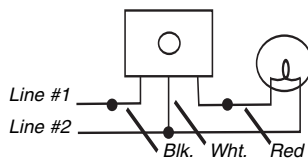
Common problems - read first!

1. **Do not face the photocell into the midday sun.** If installed on the south side of a building, face east or west or point the photo control down toward the ground. The best direction to face the photo control is north.
2. **Do not face the photocell when it can see artificial light.** Light from windows, signs, street lights, etc., will cause the photo control not to switch on. The photo control should not be positioned so that it sees the light it is controlling (or reflected light). These conditions will cause the light to cycle on and off.
3. **Do not install the photo control with wires up unless there is NO POSSIBILITY of water entering the photo control around the wires.** The photo control must be installed in an approved weatherproof box. Do not attempt to caulk around the wires.
4. **When you are testing the photo control, be sure to turn on the power (load will come on) and wait up to 5 minutes for photocell to switch load off.** For further testing cover the photo control completely with black tape or another dark material to simulate night conditions. If you can't cover the control with tape, try covering the photo control with the shipping carton to simulate night conditions.

Installation Instructions:

1. Turn power off.
2. Line voltage must be the same as indicated on the control label. **Check it!**
3. Select a location or mount the photo control so that artificial light doesn't cause the unit to turn off. Do not install the photo control so that it directly faces the midday sun. See Common Problems 1, 2 and 3 above.
4. The photo control can be mounted in any approved outdoor junction box or fixture (see illustrations on page 2).
5. Wire the photo control according to the illustrations.
6. Switch power on. the controlled load should turn on regardless of whether you are installing the unit during the day or at night.
7. If it is daylight the control should switch off within a few minutes. **See important note on next page.**

Note: A switch can be added between the red lead and the load to switch off at selected times after dark.



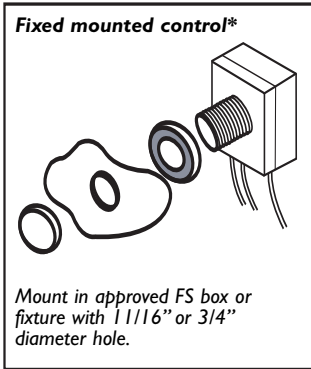
Specifications:

Operating Temperature Range: -40° to 150°F (-40° to 67°C).

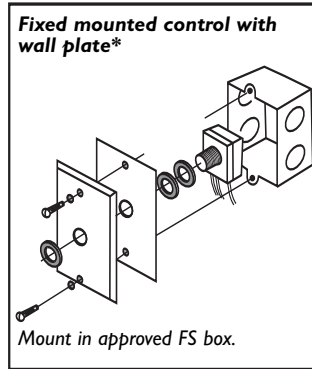
Voltage: 347 Volts

Frequency: All controls operate on 50 or 60 hertz.

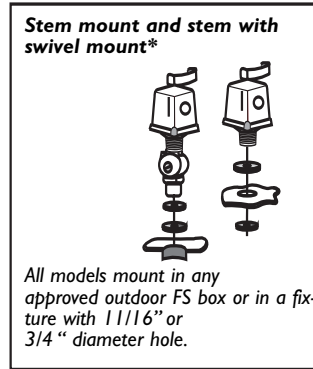
Mounting diagrams (be sure to use all gaskets provided as shown below!!!)



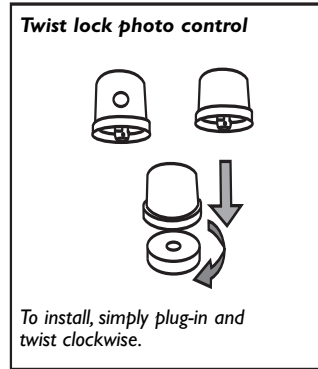
(Five-year Limited warranty)



(Five-year Limited warranty)



(Five-year Limited warranty)



(Three-year Limited warranty)

Troubleshooting Chart

Problem	Cause	Solution
Fuse blows when power is connected.	Load exceeds fuse rating. Photo control is incorrectly wired. Short in wiring.	Reduce load to within fuse rating. Check wiring.
Load lamp blinks during the day, but is on at night.	Photo control is incorrectly wired.	Rewire as shown in wiring diagram.
Load lamp blinks at night, but is off during the day.	Too much light is striking photo eye. Light from load is shining or being reflected on eye of photo control. High pressure sodium lamp is at end of life.	Reorient or relocate photo control. Relocate or reorient light source. See high pressure sodium note below.
Load stays on.	Line voltage is exceptionally low. Photo control is not rated at voltage being used. Contacts are welded due to excessive load. Not enough light strikes photo control eye.	Have power company check voltage at Replace control with unit of correct voltage Replace control and connect only rated load. Reorient or relocate photo control.
Load stays off.	Lamp and/or ballast is burned out. Line voltage is exceptionally high. Photo control is not rated at voltage being used. Too much light strikes eye of photo control at night.	Replace lamp and/or ballast Have power company check voltage at control. Replace control with unit of correct voltage. Reorient or relocate photo control.
Photo control operates normally for a short time, then remains on.	Contacts are welded due to excessive load.	Replace photo control and connect only rated load or smaller.
Photo control fails to switch off and photo-cell shows evidence of burning or arcing across serpentine pattern.	Photo control damaged by lightning or other high-energy transient.	Replace photo control. Consider installing "LA" Model Control, lightning arrestor or surge protection device in circuit.
High pressure sodium or mercury vapor end-of-life failure.	With these lamps the end-of-life failure mode is one of cycling (the initial cycling period may be as long as one-hour but will shorten to as little as one minute).	Replace lamp and/or ballast.

LIMITED WARRANTY

If within the warranty period specified, this product fails due to a defect in material or workmanship, Intermatic Incorporated will repair or replace it, at its sole option, free of charge. This warranty is extended to the original household purchaser only and is not transferable. This warranty does not apply to: (a) damage to units caused by accident, dropping or abuse in handling, acts of God or any negligent use; (b) units which have been subject to unauthorized repair, opened, taken apart or otherwise modified; (c) units not used in accordance with instructions; (d) damages exceeding the cost of the product; (e) sealed lamps and/or lamp bulbs, LED's and batteries; (f) the finish on any portion of the product, such as surface and/or weathering, as this is considered normal wear and tear; (g) transit damage, initial installation costs, removal costs, or reinstallation costs.

INTERMATIC INCORPORATED WILL NOT BE LIABLE FOR INCIDENTAL OR CONSEQUENTIAL DAMAGES. SOME STATES DO NOT ALLOW THE EXCLUSION OR LIMITATION OF INCIDENTAL OR CONSEQUENTIAL DAMAGES. SO THE ABOVE LIMITATION OR EXCLUSION MAY NOT APPLY TO YOU. THIS WARRANTY IS IN LIEU OF ALL OTHER EXPRESS OR IMPLIED WARRANTIES. ALL IMPLIED WARRANTIES, INCLUDING THE WARRANTY OF MERCHANTABILITY AND THE WARRANTY OF FITNESS FOR A PARTICULAR PURPOSE, ARE HEREBY MODIFIED TO EXIST ONLY AS CONTAINED IN THIS LIMITED WARRANTY, AND SHALL BE OF THE SAME DURATION AS THE WARRANTY PERIOD STATED ABOVE. SOME STATES DO NOT ALLOW LIMITATIONS ON THE DURATION OF AN IMPLIED WARRANTY, SO THE ABOVE LIMITATION MAY NOT APPLY TO YOU.

This warranty gives you specific legal rights and you may also have other rights which vary from state to state. Warranty service is available by mailing postage prepaid to: Intermatic Incorporated / After Sales Service, 7777 Winn Road, Spring Grove, IL, 60081-9698, 815-675-7000, <http://www.intermatic.com> Please be sure to wrap the product securely to avoid shipping damage.

IMPORTANT NOTE:

The load being controlled by your photo control will be on even if installation is done during daylight hours. Allow a few minutes for the photo control to operate and turn the load off. To test the control in daylight, cover the photo eye completely and wait for the load to switch on (up to five minutes may be needed). If this does not work, switch breaker off and wait ten minutes. Switch breaker on. The load should be on.